

Fieldwork Monitoring in PASS

IAB Workshop: Moving Responsive Design
Forward
Nürnberg, Nov 4, 2011

Gerrit Müller

Outline

- Overview PASS
- Fieldwork procedures to reduce NR and panel attrition
- Call records and auxiliary data
- Wave 5 fieldwork monitoring: some examples
- Towards responsive design
- Challenges

Panel Study "Labor Market and Social Security" (PASS)

- Longitudinal data base for labor market, welfare state and poverty research in Germany
- In particular: for academic- and policy-oriented research into the *Hartz*-reforms
- Commissioned and financed by Federal Ministry of Labor and Social Affairs (BMAS)
- Started in 2006
- Current status: Wave 5 data collection completed

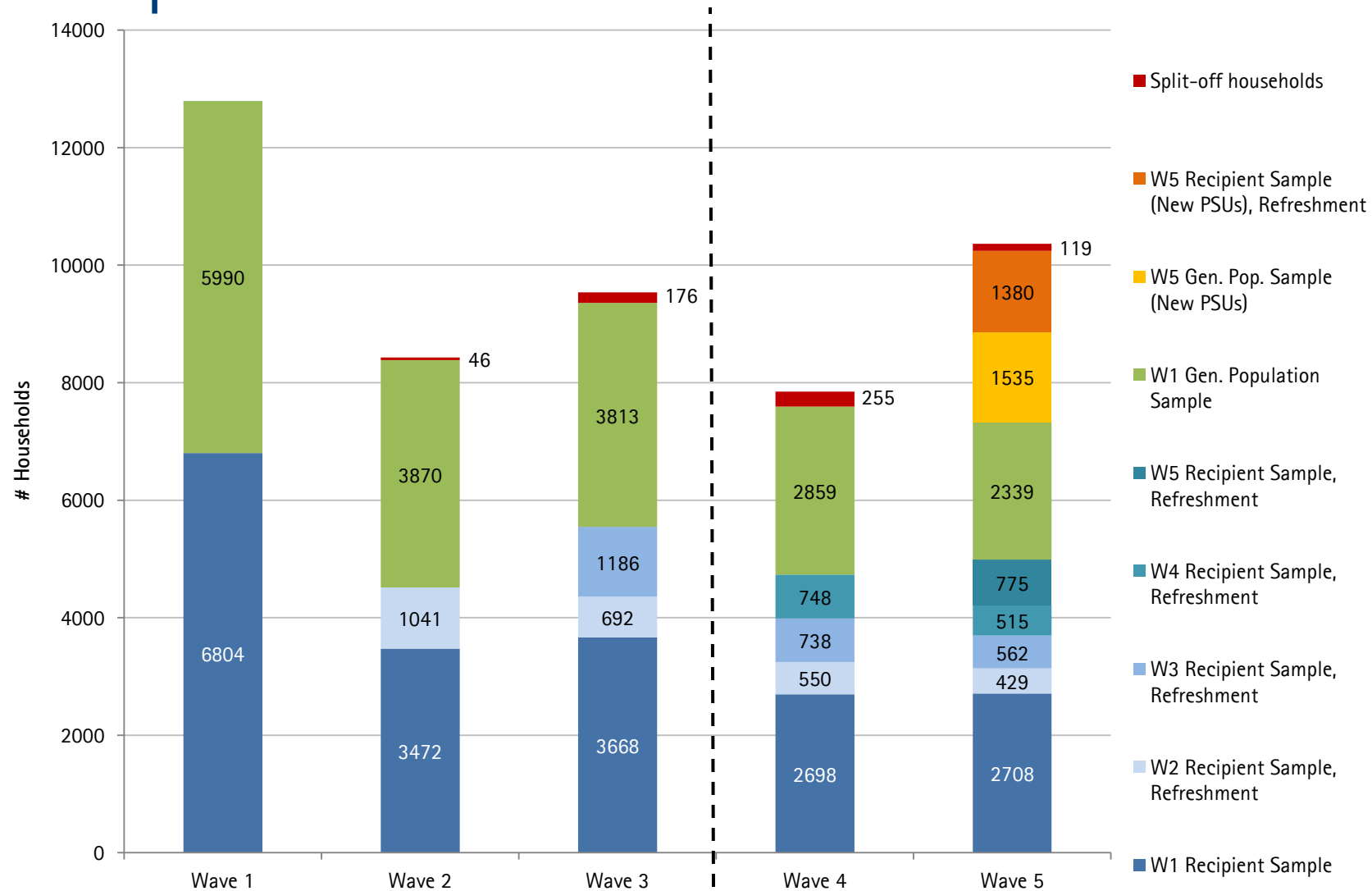
Panel Study "Labor Market and Social Security" (PASS)

- Dual frame survey: welfare recipient sample + yearly refreshment samples; population sample
- Core modules: Welfare benefits, (un)employment, income, deprivation, job search, participation in ALMP, etc.
- HH-level interview with target head (20 min, +5)
 - + P-level interviews with each $P > 15y$ (30 min, +15)
- Change in fieldwork agency after wave 3

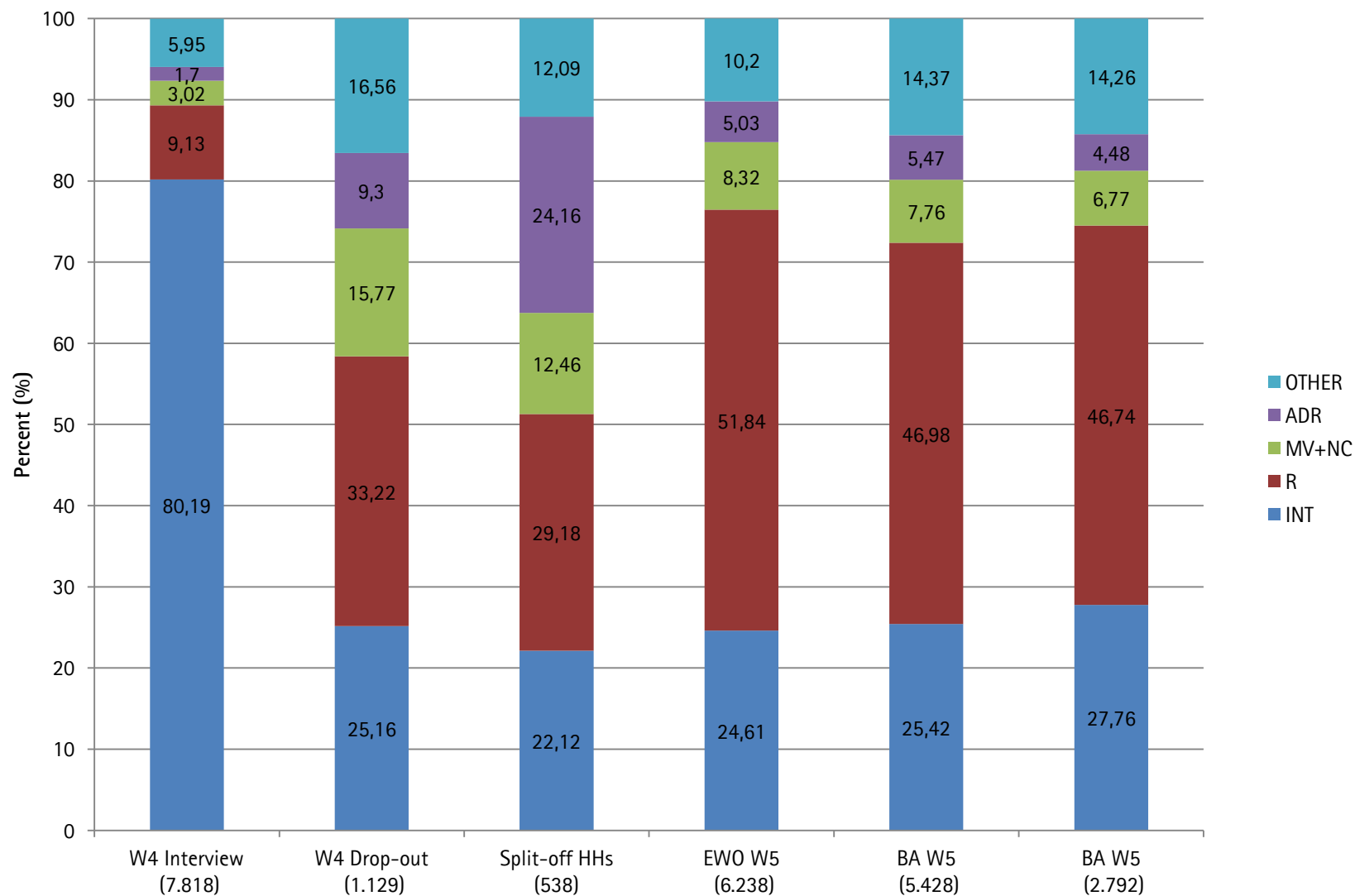
Fieldwork Procedures to Reduce Initial Nonresponse and Panel Attrition

- (Sequential) Mixed-mode design; CAPI, CATI
- Foreign-language interviews
- Refusal conversion
- Tracking
- Advance letter and other survey notification material
- Respondent incentives

Sample Attrition



Wave 5, Preliminary Results



Paradata/Auxiliary Data

- Call record data
 - Auxiliary data linked at level of address
- + Sampling frame data,
administrative records } recipient sample(s)
- + previous wave(s) survey data } panel households
- + previous wave(s) call record data }

Call Record Data

- For each call attempt, in both survey modes, at both levels of interviewing (HH- and P-level)
 - exact time and date
 - detailed action/outcome codes (>40 categories)
 - interviewer ID
- Biweekly delivery
- Feedback from F2F interviewers with some time lag
- Steady improvement since wave 1

Auxiliary Data

- Microm-MOSAIC database
 - Households, persons, trades/businesses listed at address
 - Type of housing, type of street
 - No. of moving households/fluctuation/turnover
 - Share of foreigners, share of academics, share of families with children, singles; Age distribution
 - Socioeconomic status, purchasing power index, local unemployment rate
- For details please see: www.microm-online.de

Additional Sampling Frame Data

- Only for recipient sample(s)
 - Head of household:
 - Age (in years)
 - Gender
 - Educational attainment (highest degree)
 - Citizenship
 - Benefit unit:
 - Type and size
 - Source (A2LL, XSOZIAL)

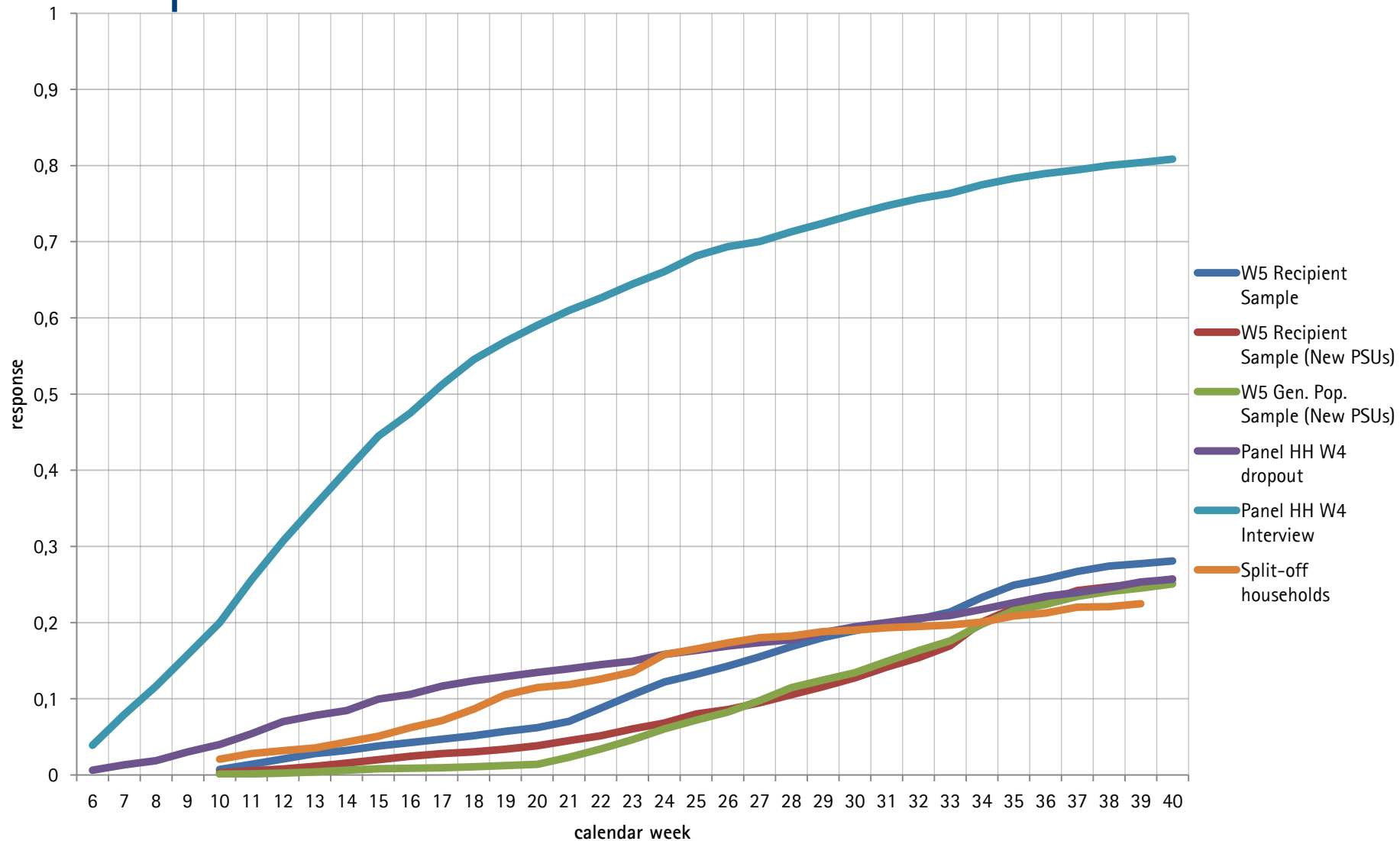
Wave 5 Fieldwork Monitoring

- Monitoring of trends in key indicators across weeks in current data collection period
- Comparison to trends in previous period
- Monitoring of potential NR-bias/selectivity based on linked auxiliary and sampling frame data

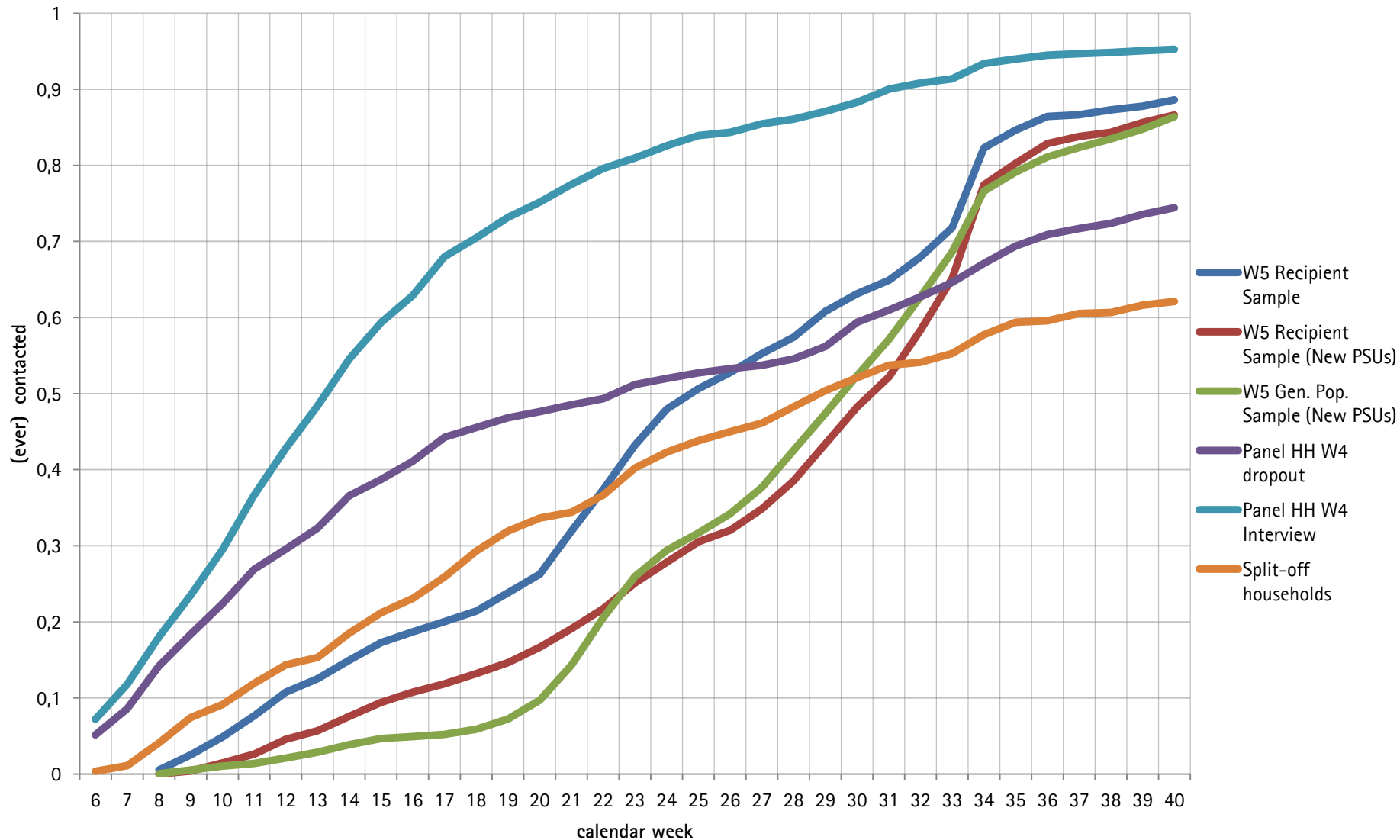
Key Indicators

- Response rates
- Contact rates
- Cooperation Rates | Contact
- Address issues
- Appointments
- P-level interviews within HHs, completeness

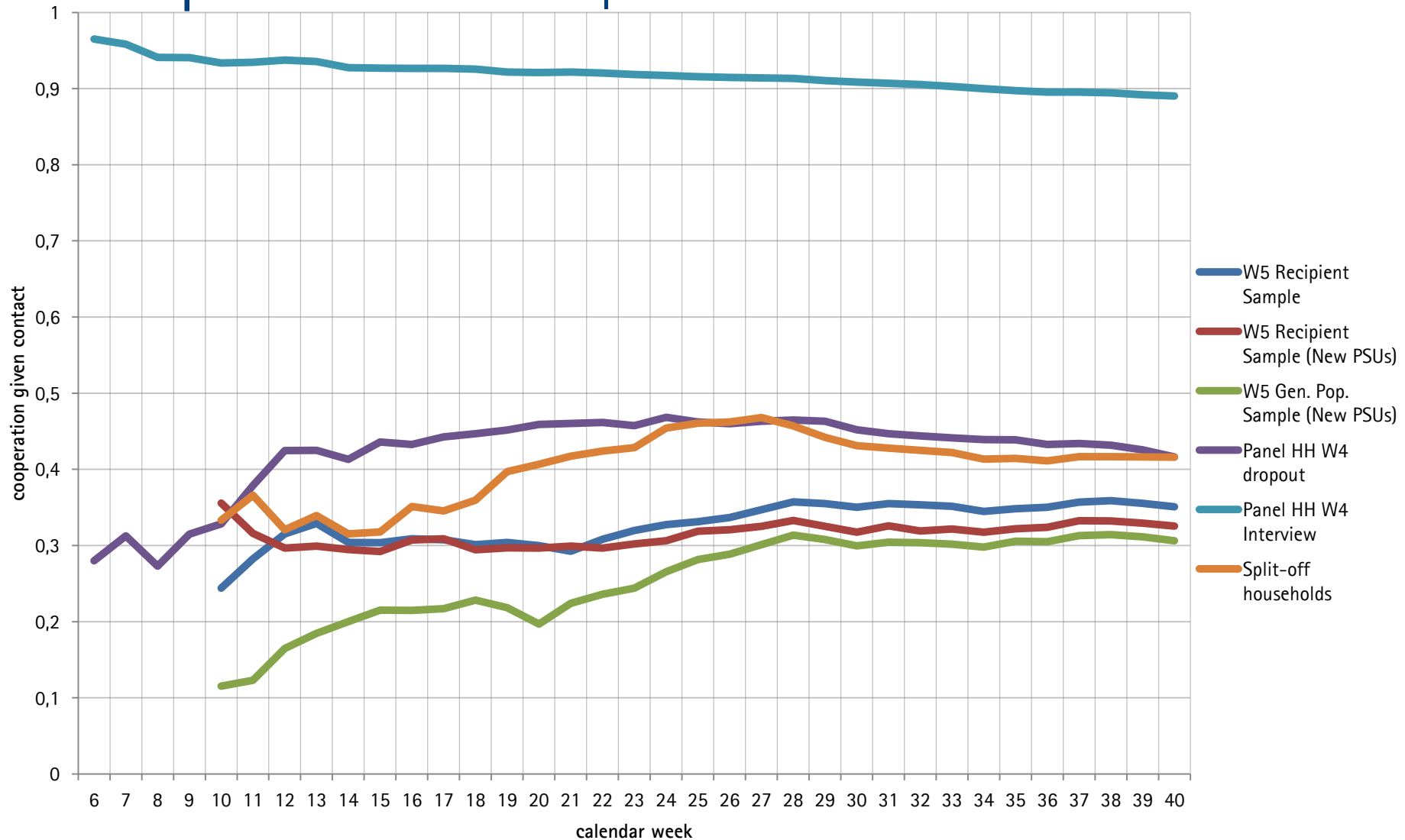
Response Rates



Contact Rates



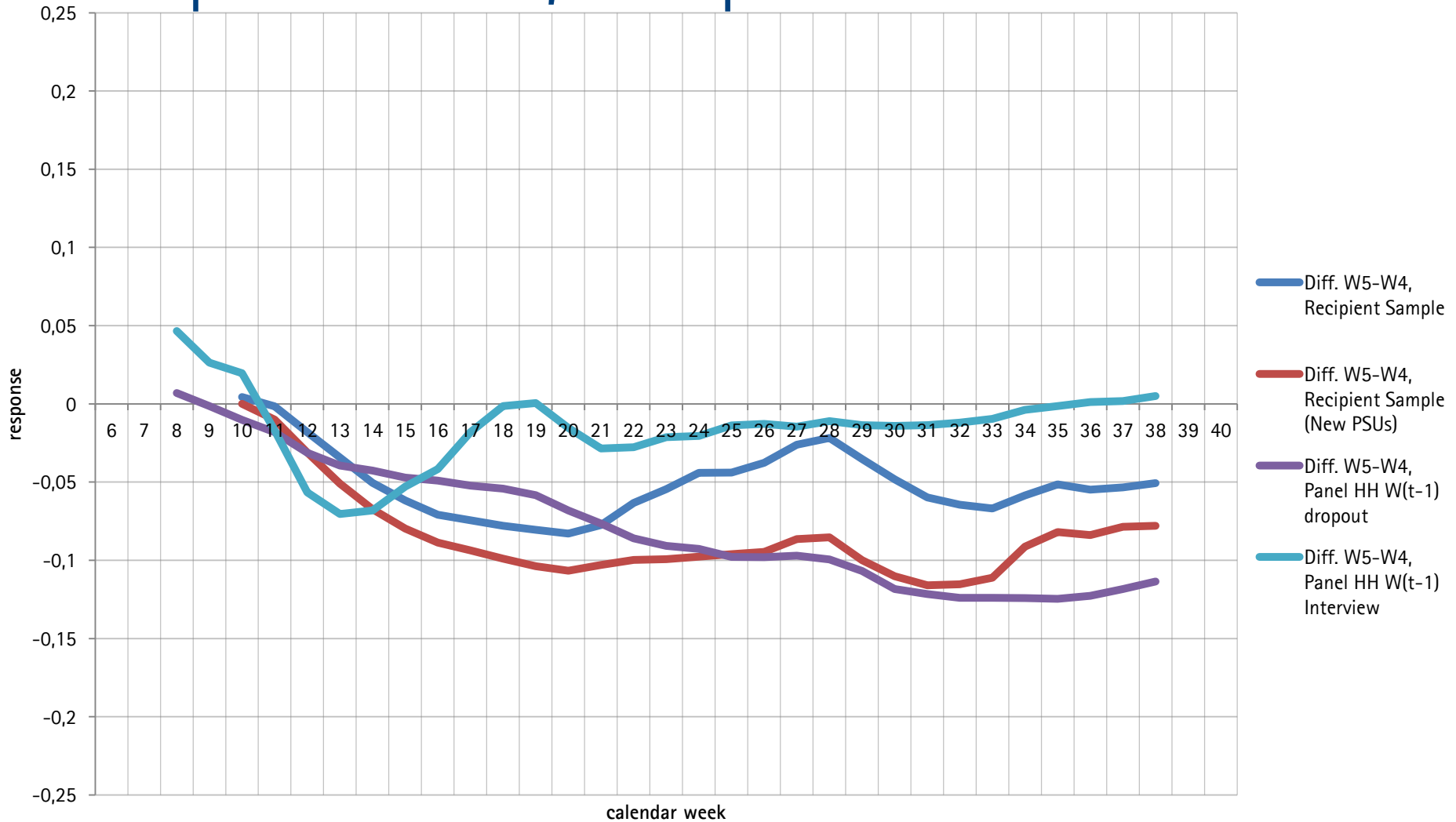
Cooperation Rates|Contact



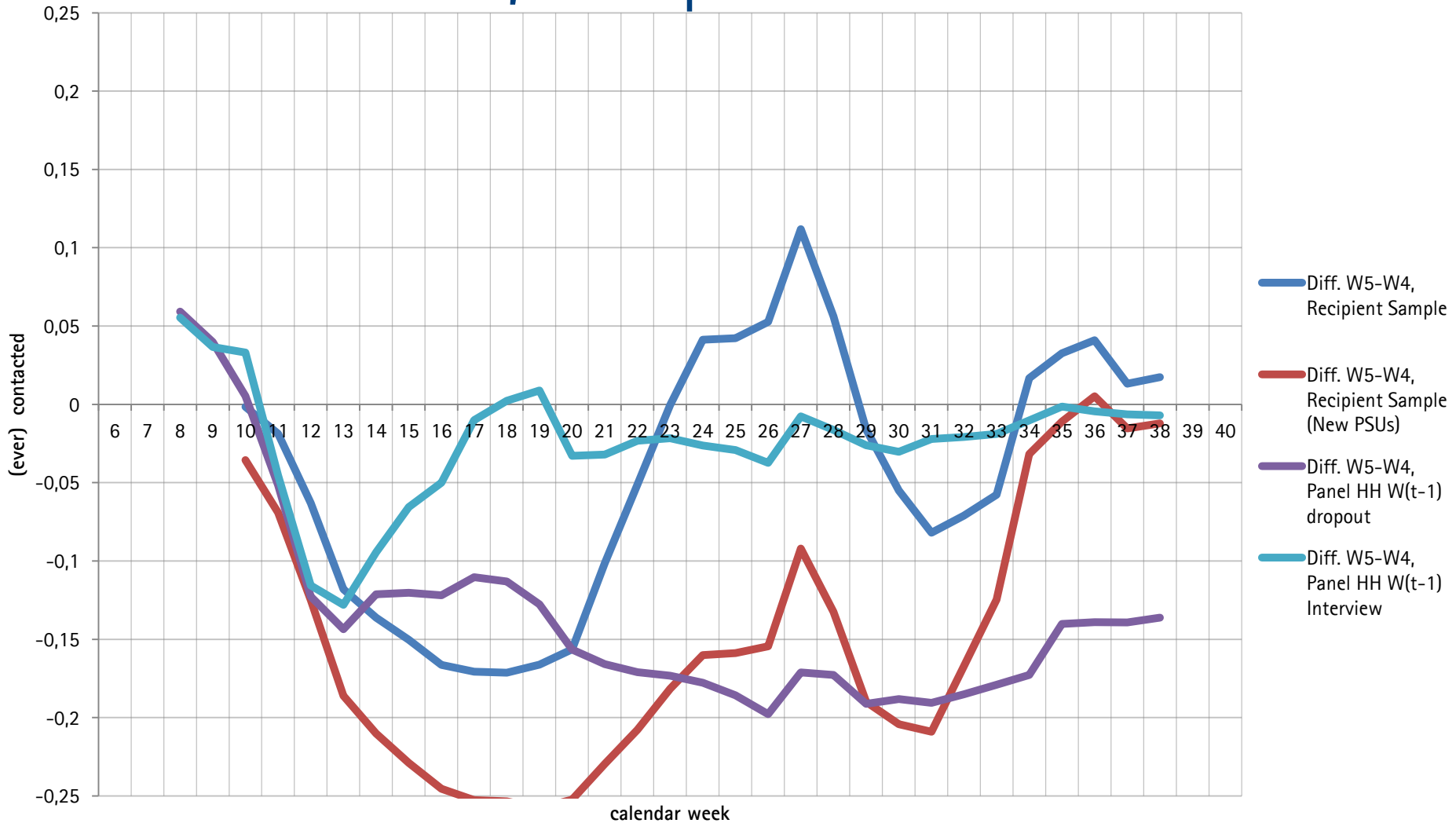
Comparison to Trends in Wave 4

- Response rates
- Contact rates
- Cooperation Rates | Contact

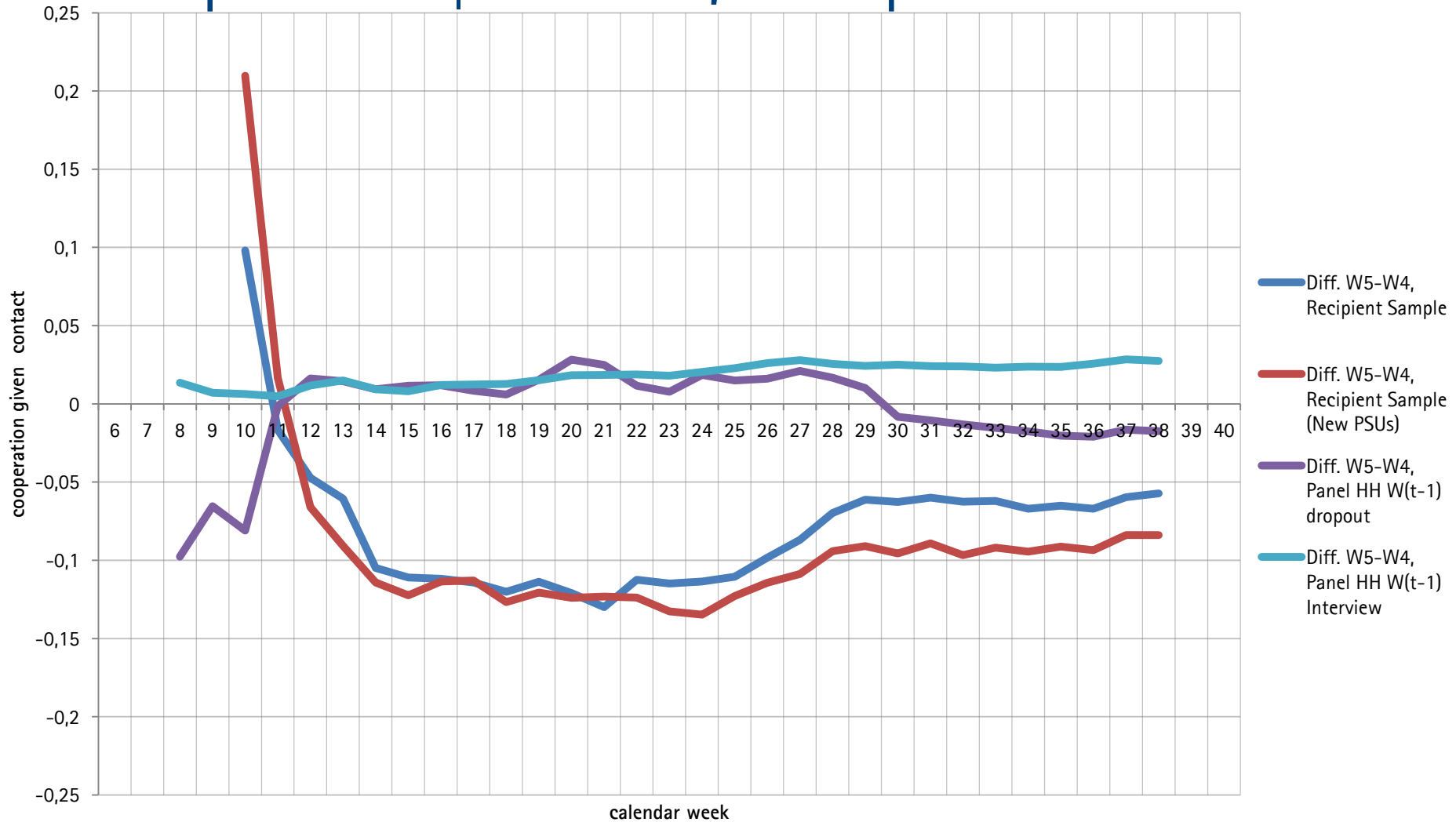
Response Rates; Δ to previous wave



Contact Rates; Δ to previous wave



Cooperation|Contact; Δ to previous wave

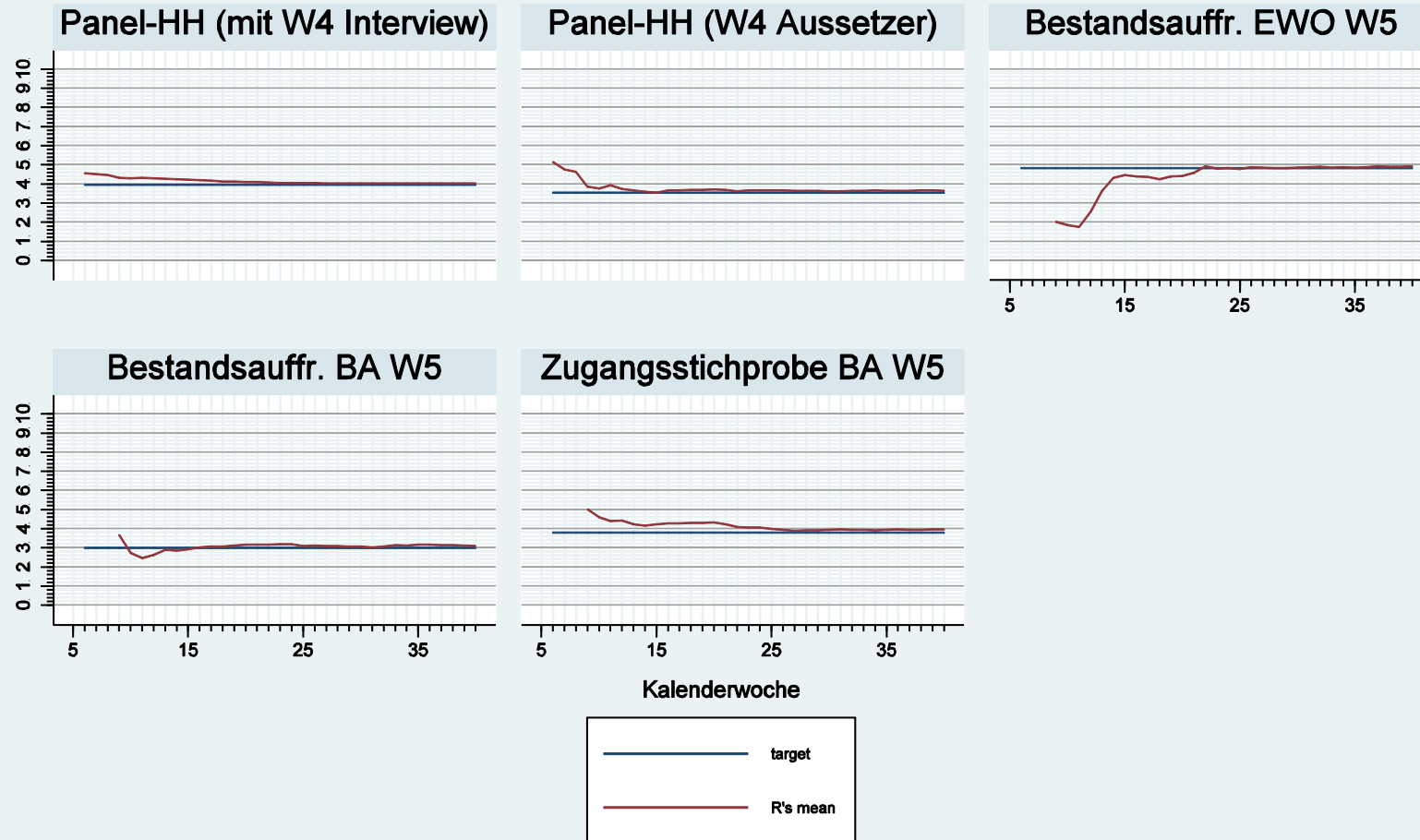


Monitoring Auxiliary Variables

- Monitoring of potential NR-bias/selectivity based on linked auxiliary and sampling frame data
- e.g. Degree to which respondents and full sample differ based on single auxiliary variables; three examples from Microm MOSAIC database:
 - socioeconomic status ("status")
 - level of education ("akademik")
 - foreign nationality ("ausland")

NR-BIAS: Microm 'status'

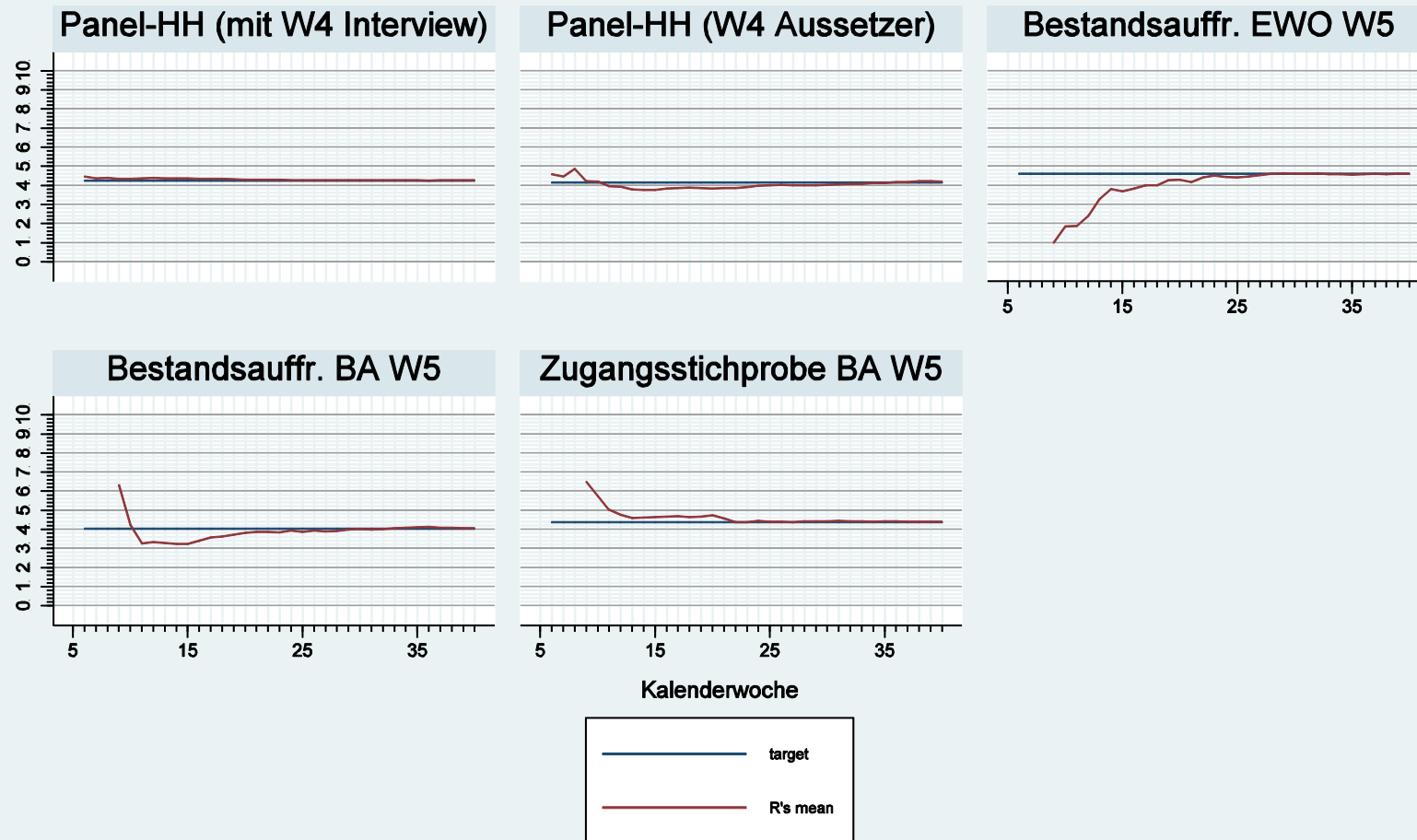
Welle 5, bis Kalenderwoche 40



Graphs by HhTypW5

NR-BIAS: Microm 'akademik'

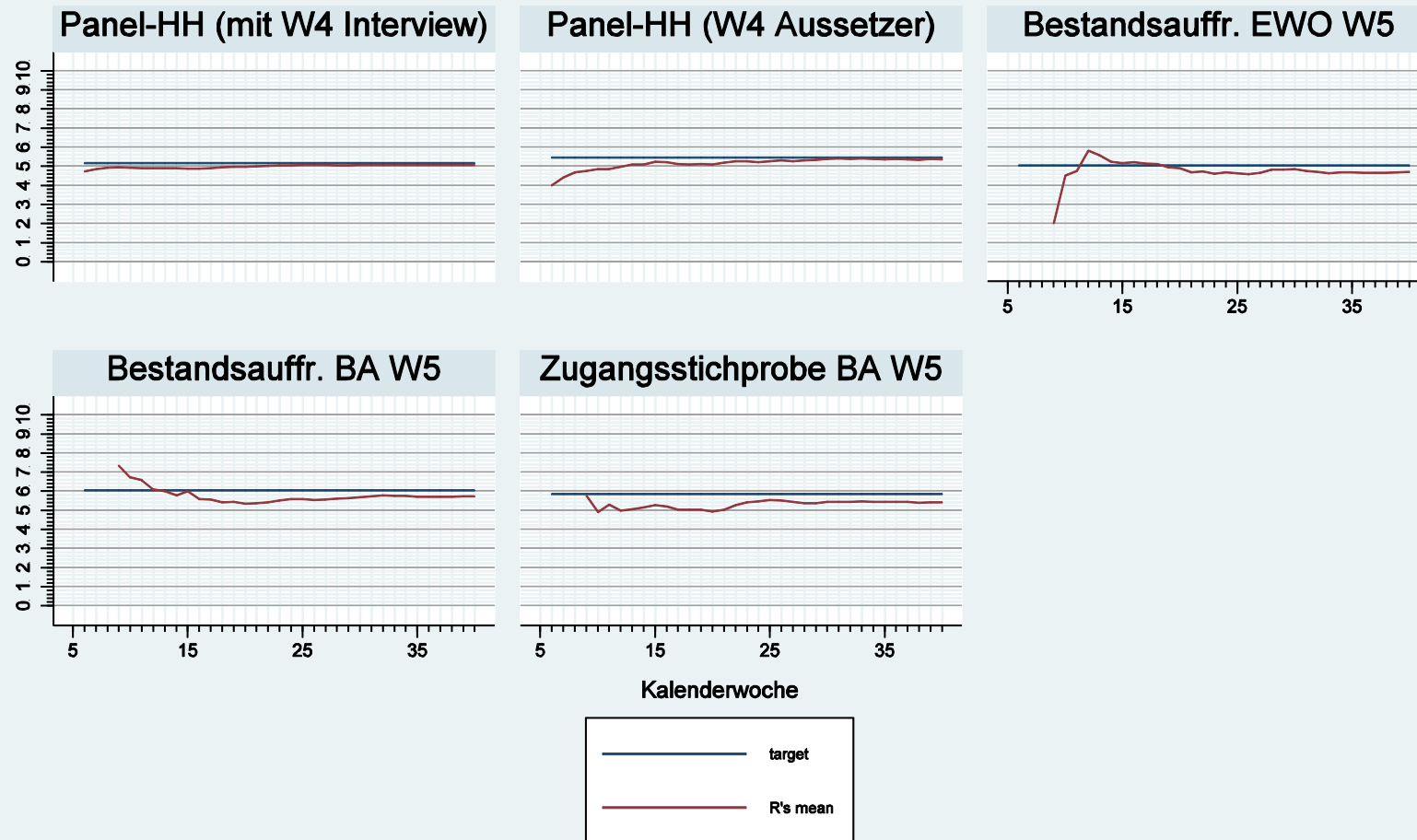
Welle 5, bis Kalenderwoche 40



Graphs by HhTypW5

NR-BIAS: Microm 'ausland'

Welle 5, bis Kalenderwoche 40

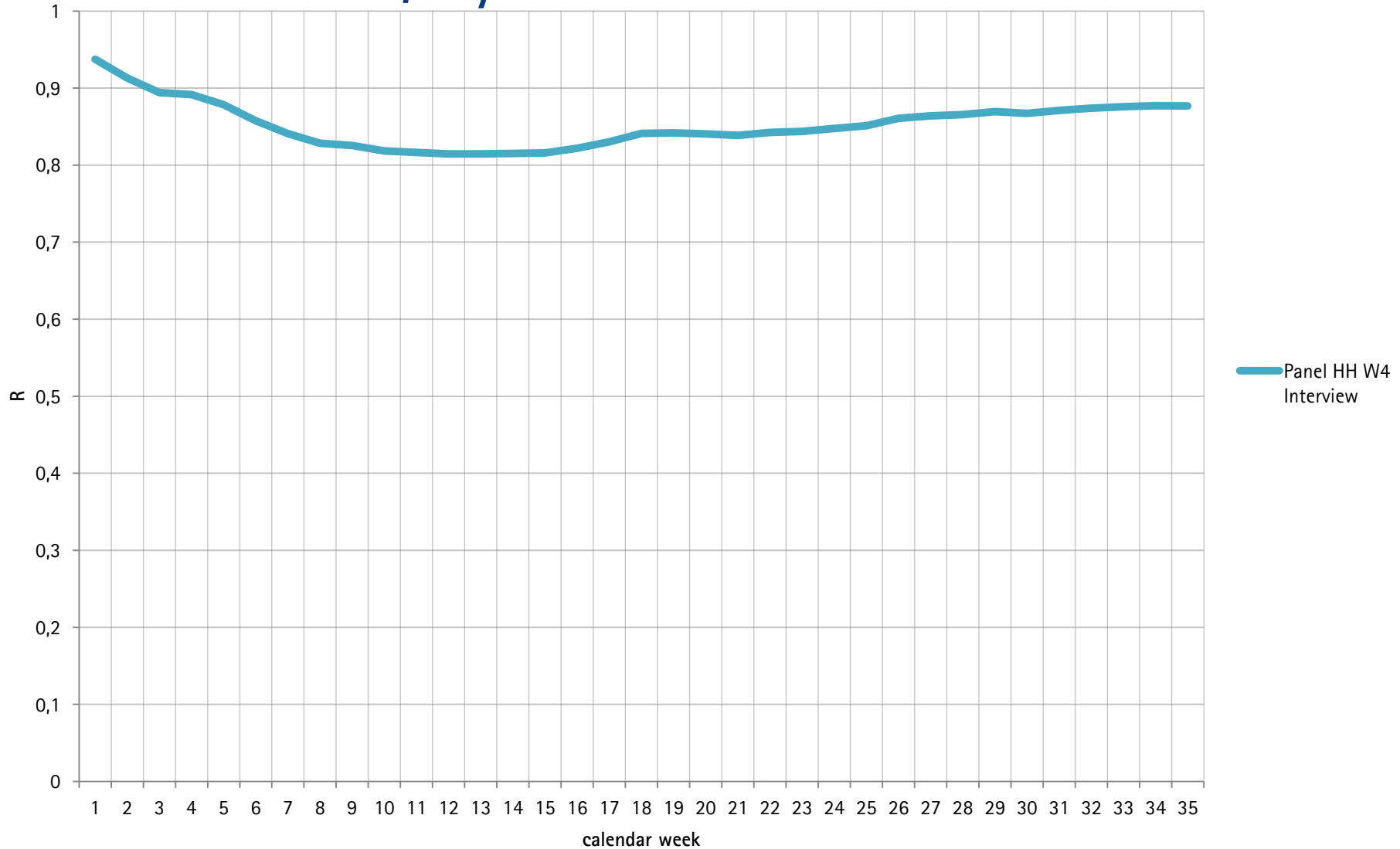


Graphs by HhTypW5

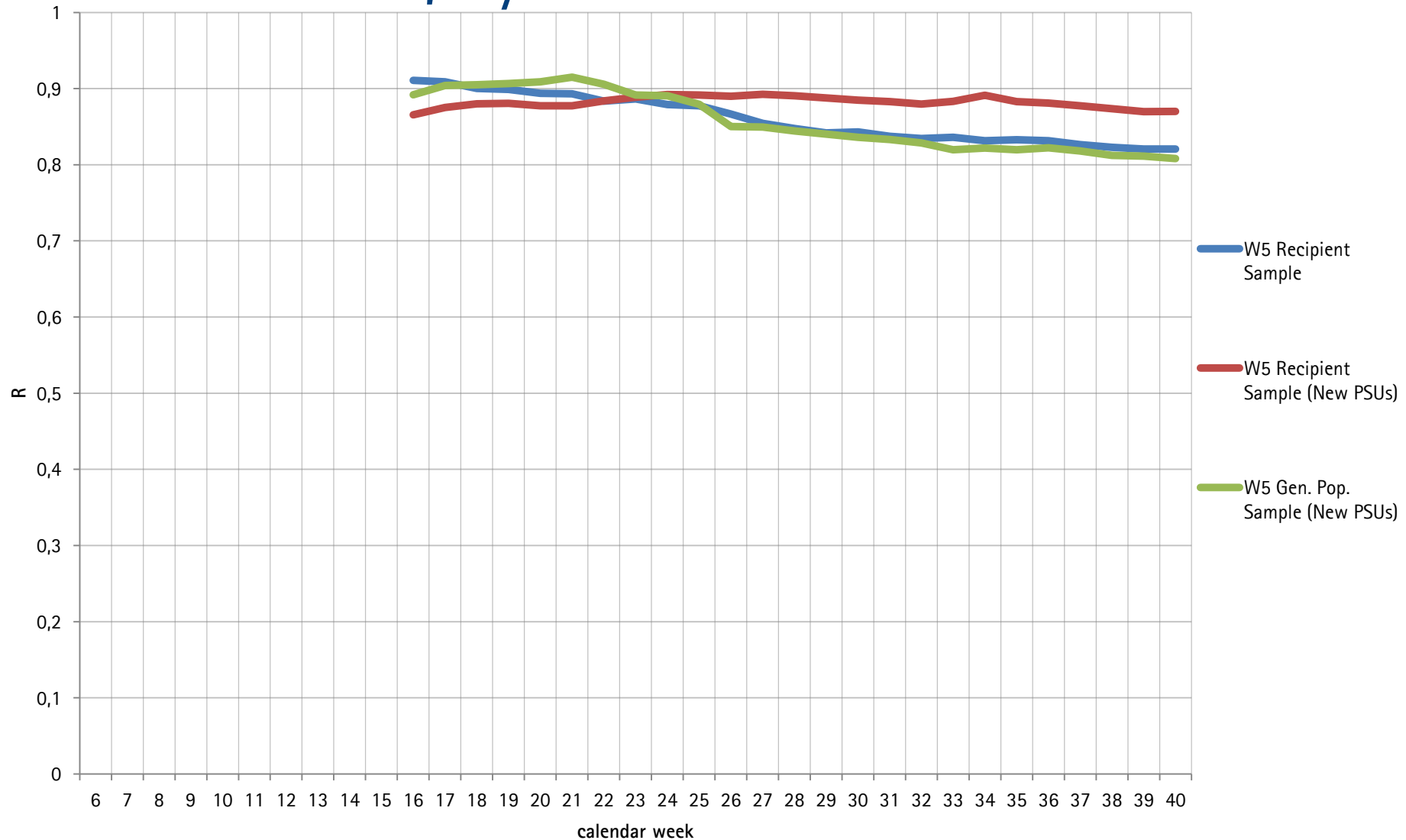
R-Indicators

- (survey level) Measure of "representativity" of response based on variance of response propensities
- Response is representative with respect to x when $p(x)$ are constant over x (and equal to \bar{p})
- $R = 1 - 2 \cdot SD(p)$
- Details on model specification & estimation upon request
- Schouten et al. (2009)
- RISQ-Project, Representativity Indicators for Survey Quality

R-Indicator, by calendar week



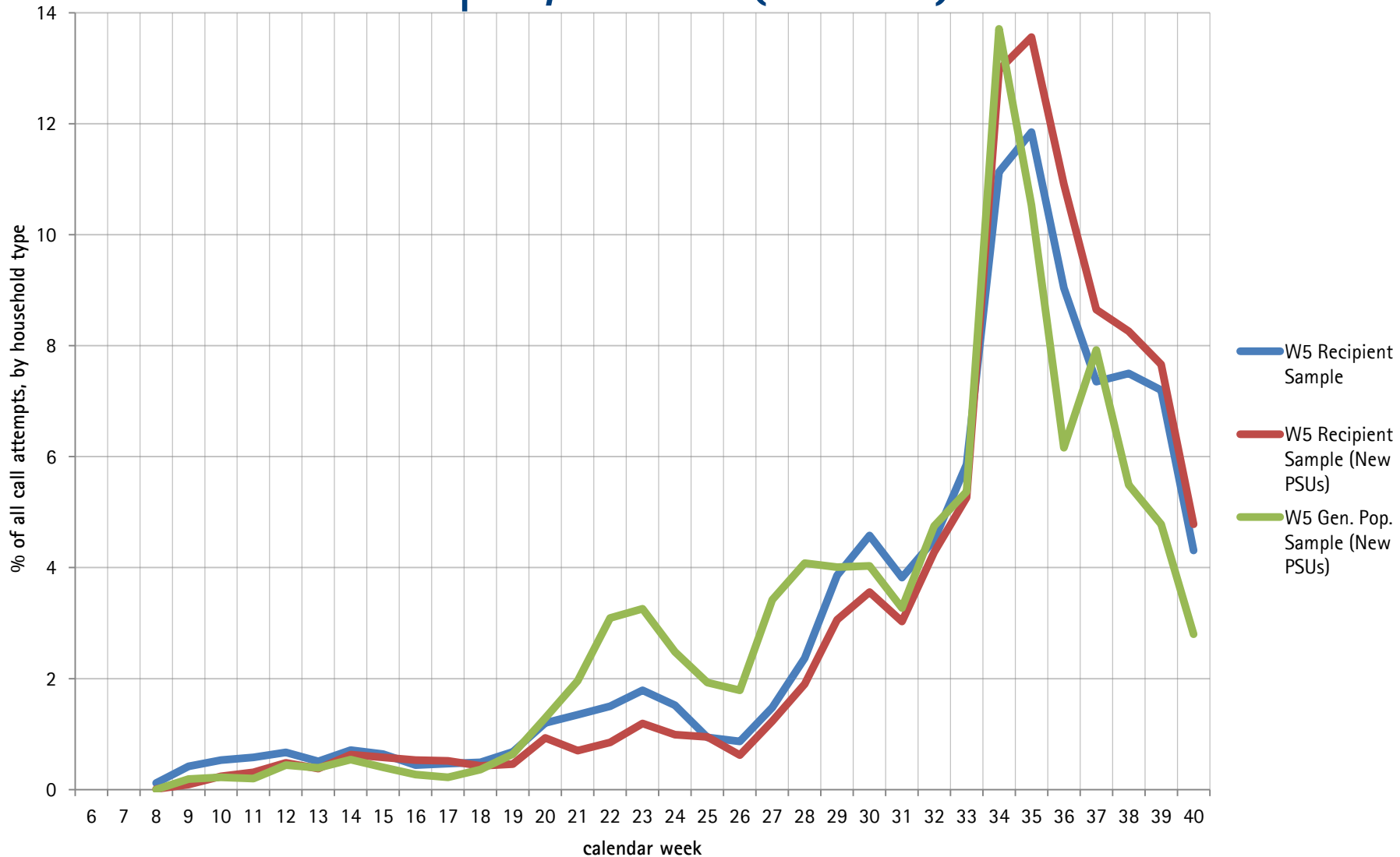
R-Indicators, by calendar week



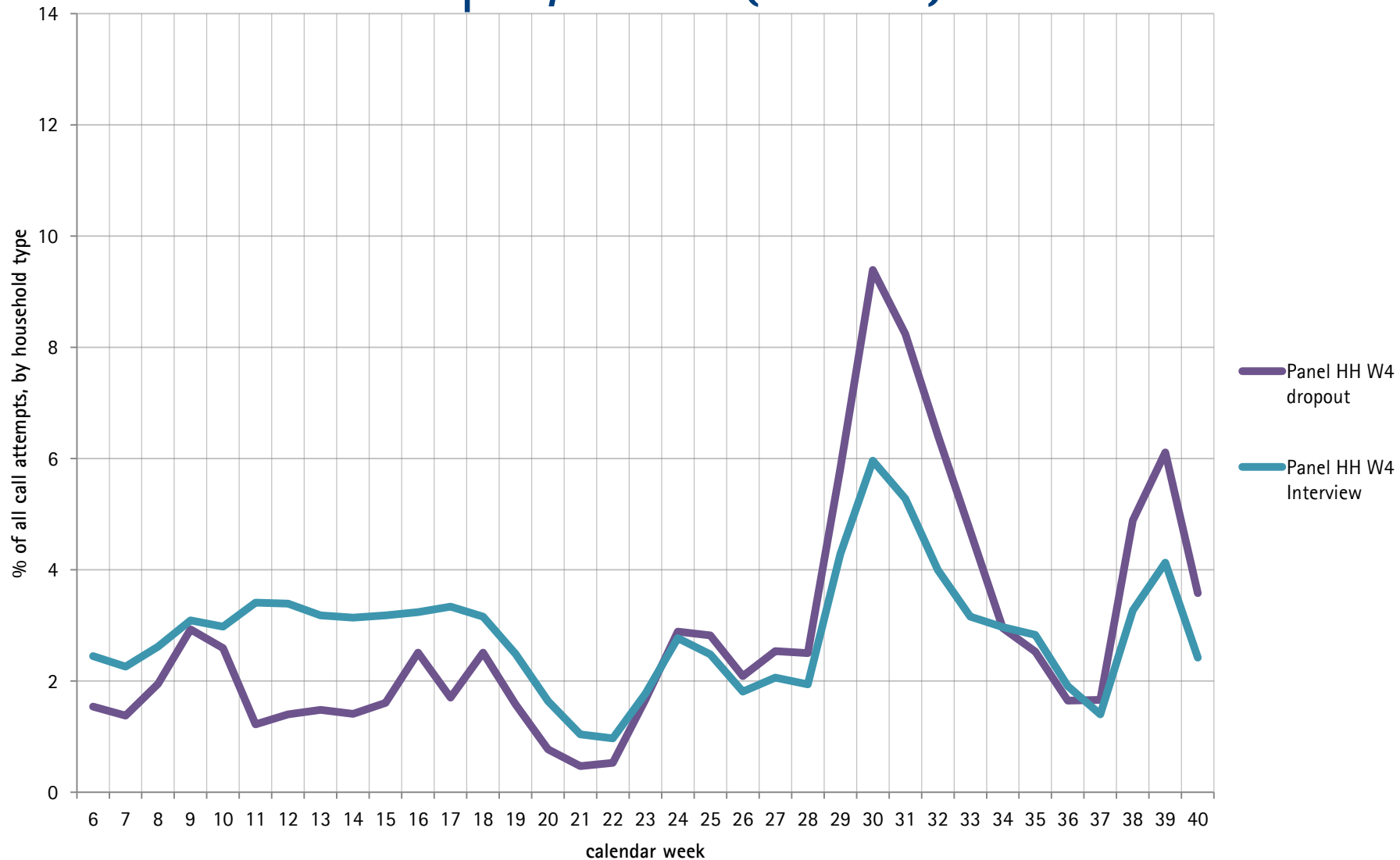
"Interventions", Current Practice

- fixed recruitment protocol applied to all cases
- weekly conference calls with infas project manager
- largely "ad hoc"
- no randomization and evaluation of alterations to recruitment protocol
- Wave 5 examples, in reaction to low effort/productivity: ivwr incentives, ivwr selection, switch to concurrent mixed-mode

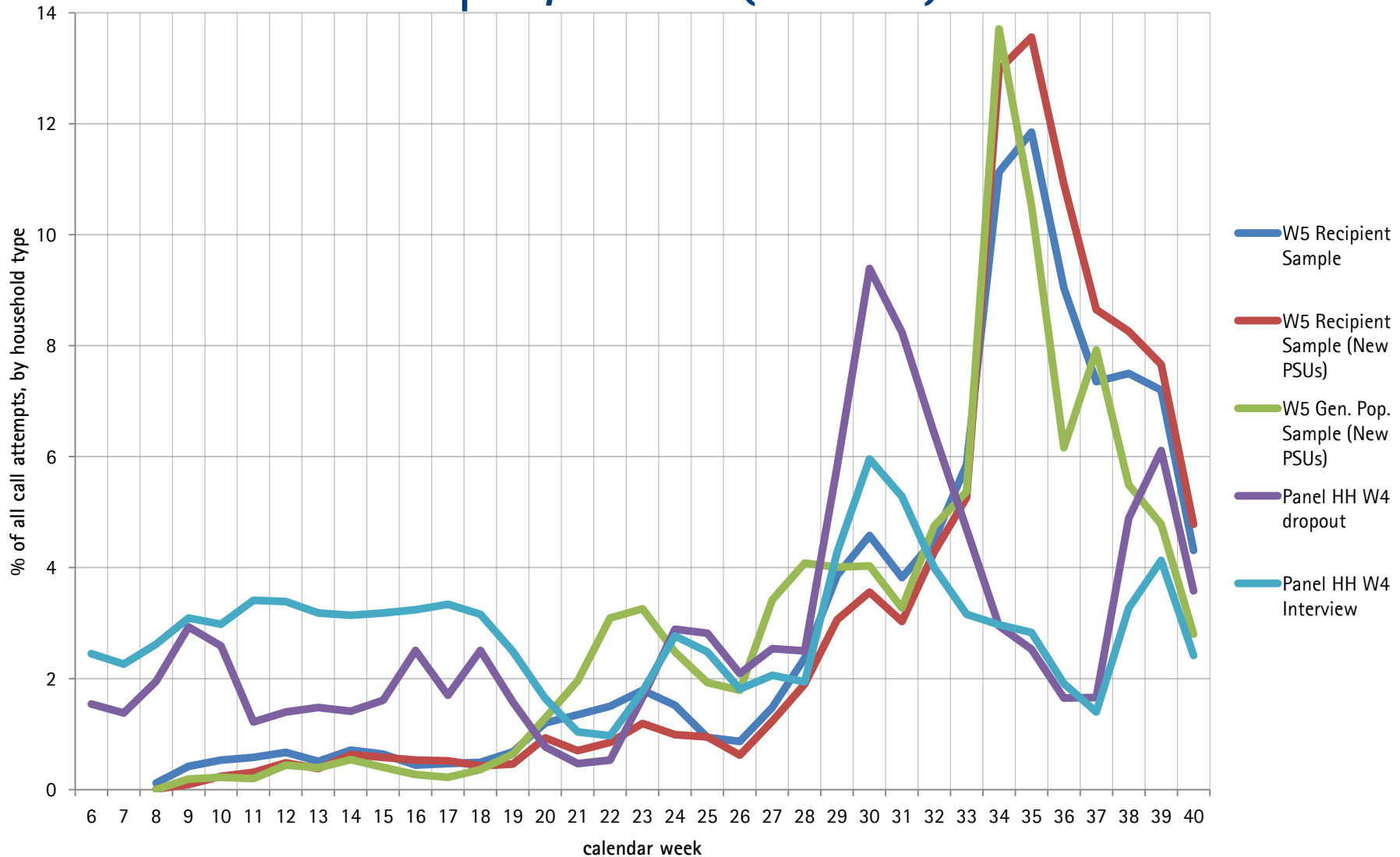
% Call Attempts/Week (Effort)



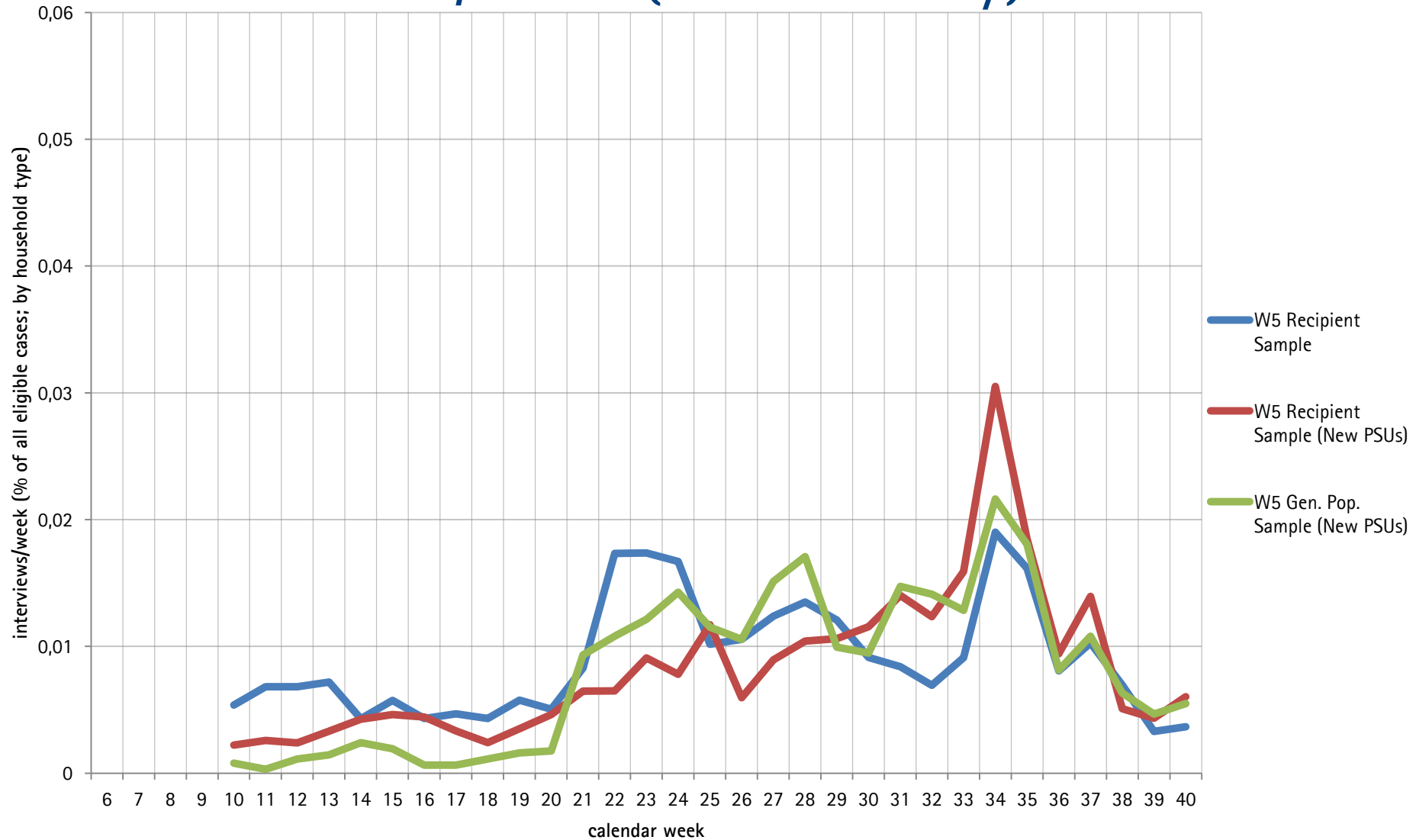
% Call Attempts/week (Effort)



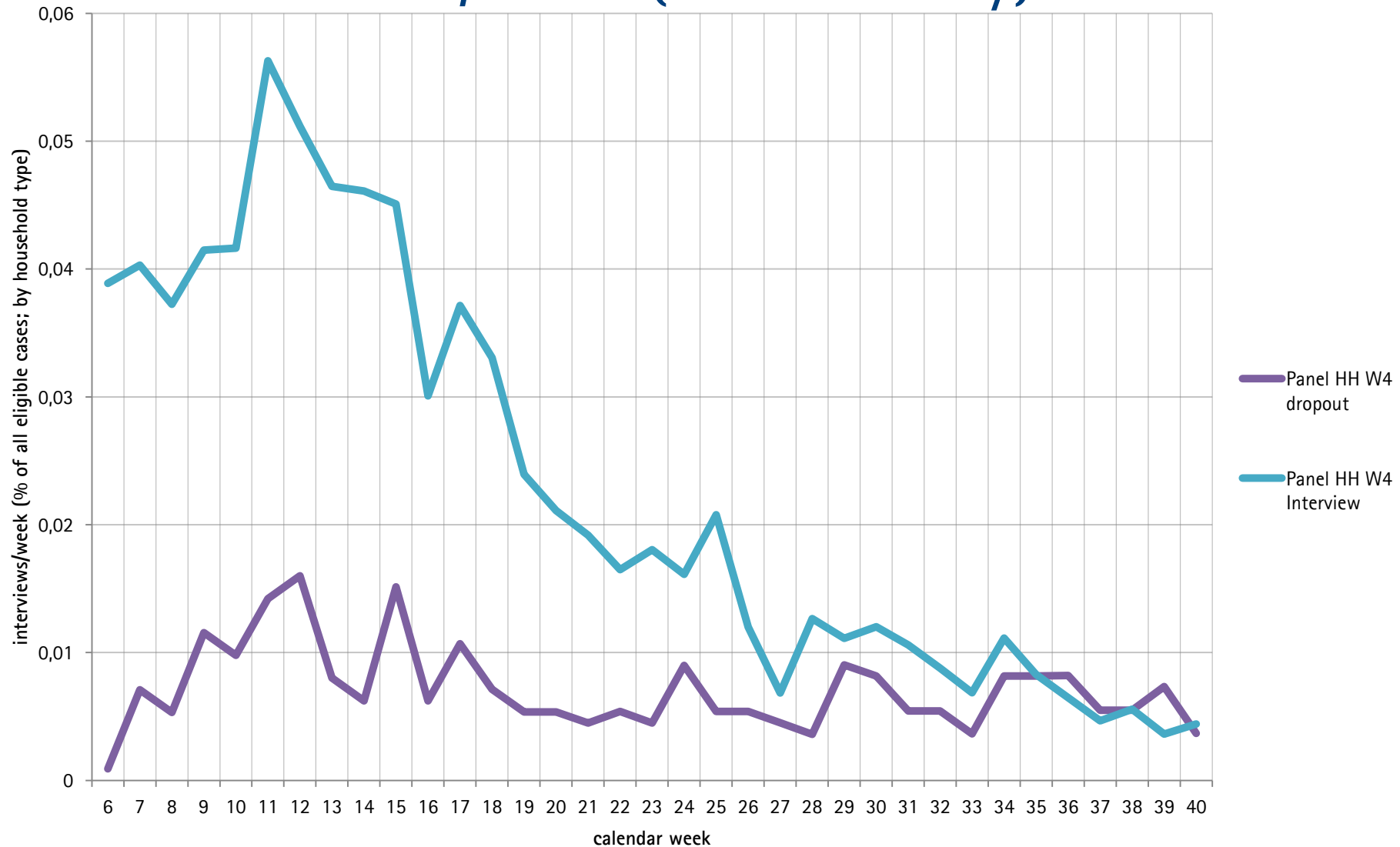
% Call Attempts/week (Effort)



% Interviews/week (Productivity)



% Interviews/week (Productivity)



(Realistic) Next Steps

- Gradual transition to “responsive” design; between wave analysis of call records and linked auxiliary data
- Flag/prioritize cases in sample management system at beginning of next wave
- Define “phases” and shift effort to earlier phases
-> time for tracing, refusal conversion, protocol changes
- Stronger focus on “representativity” or balance indicators in monitoring (and in future, potentially, also in reprioritizing cases during fieldwork)

Practical Challenges

- Ability to deliver instructions to the field data collection organization to alter their focus from one activity to another
- Principal-agent problem
- Capacity constraints (multiple surveys)
- Interviewer behavior

Institute for Employment
Research

The Research Institute of the
Federal Employment Agency



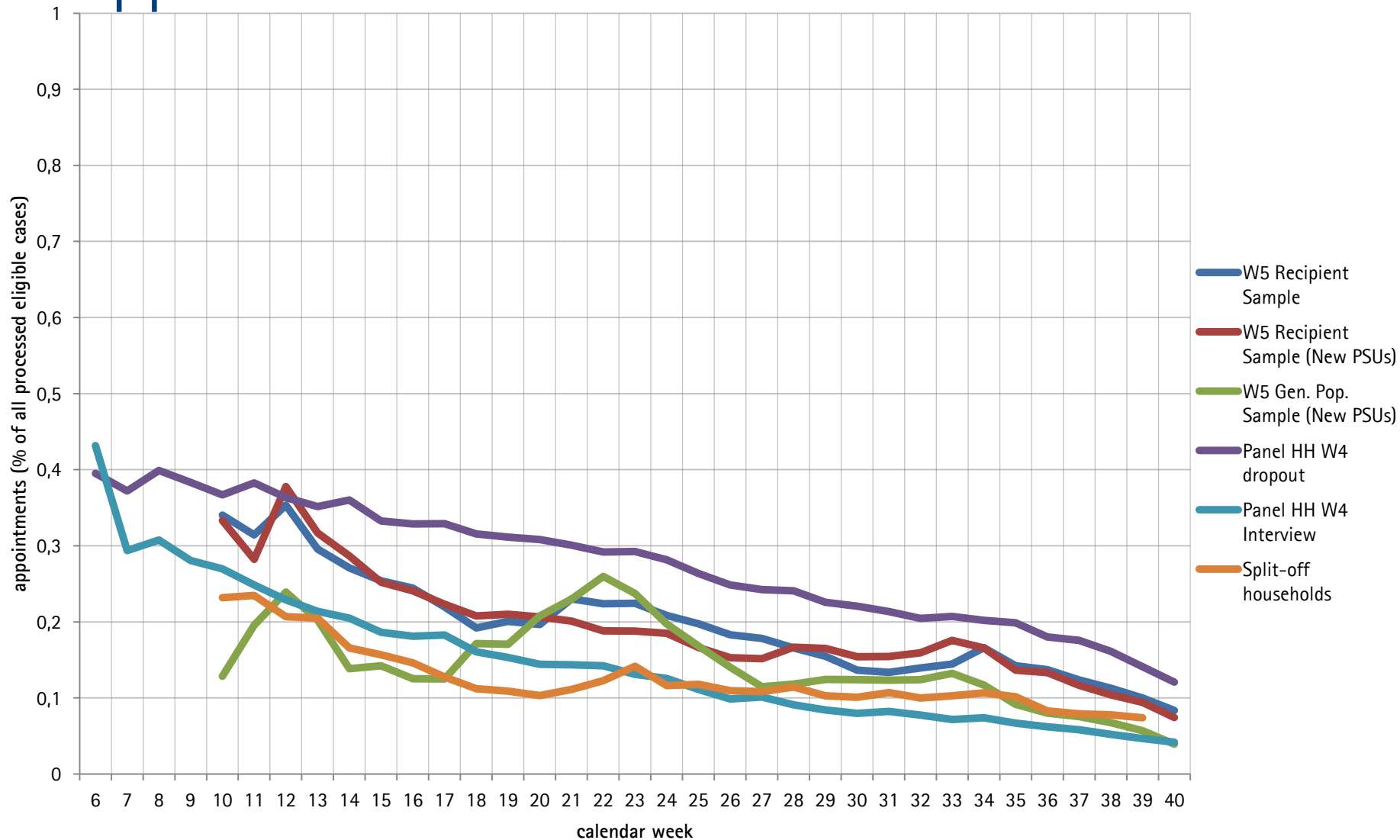
Thank You!

gerrit.mueller@iab.de

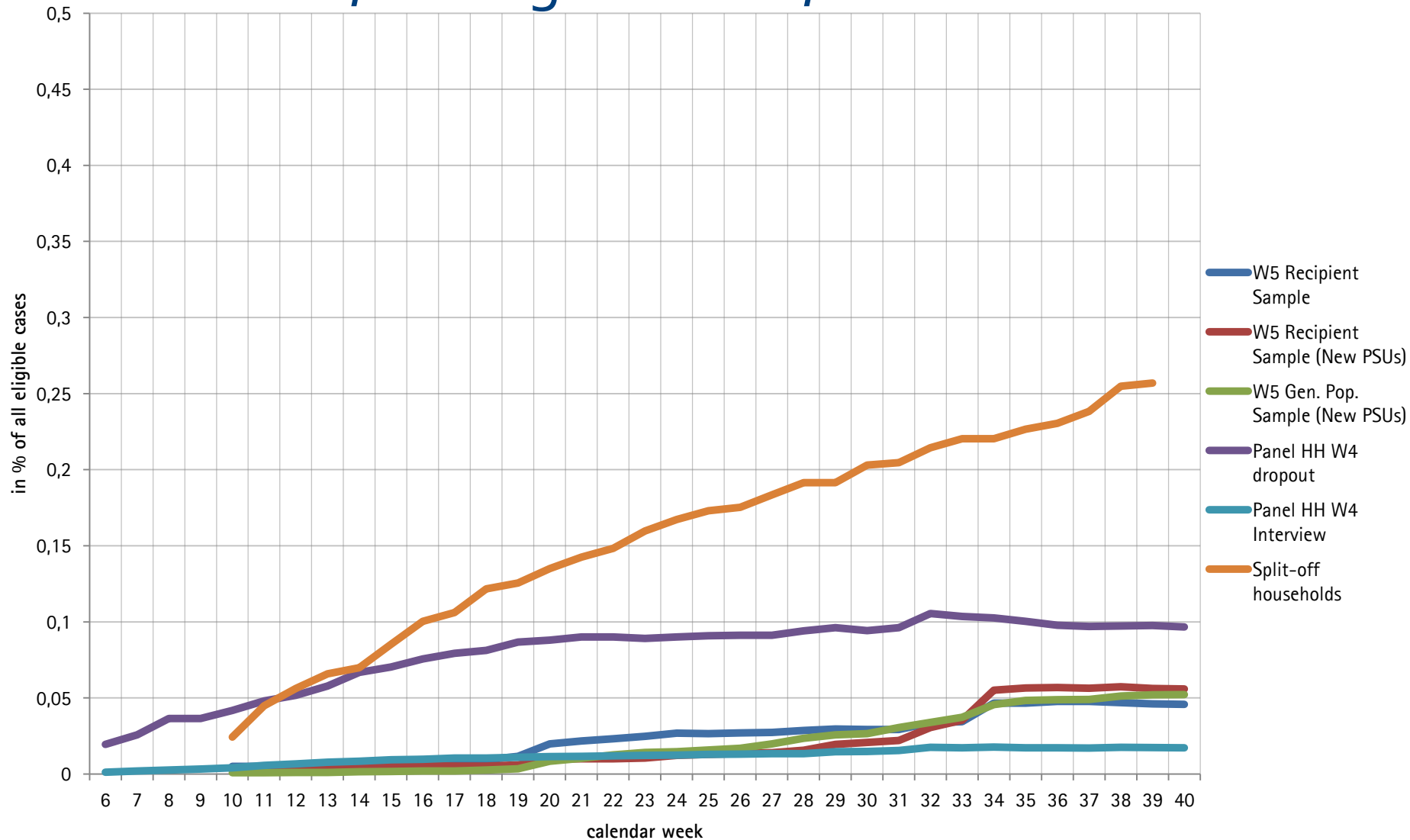
www.iab.de

Backup

Appointments



Unknown/Wrong Address/Tel. No.



PASS Vollständigkeit innerhalb von HH

Welle 5, bis Kalenderwoche 40

