

# Event driven processing

Magda Slootbeek-van Laar and Johan Lammers



Statistics  
Netherlands

# Regular versus eventdriven



# Regular versus eventdriven



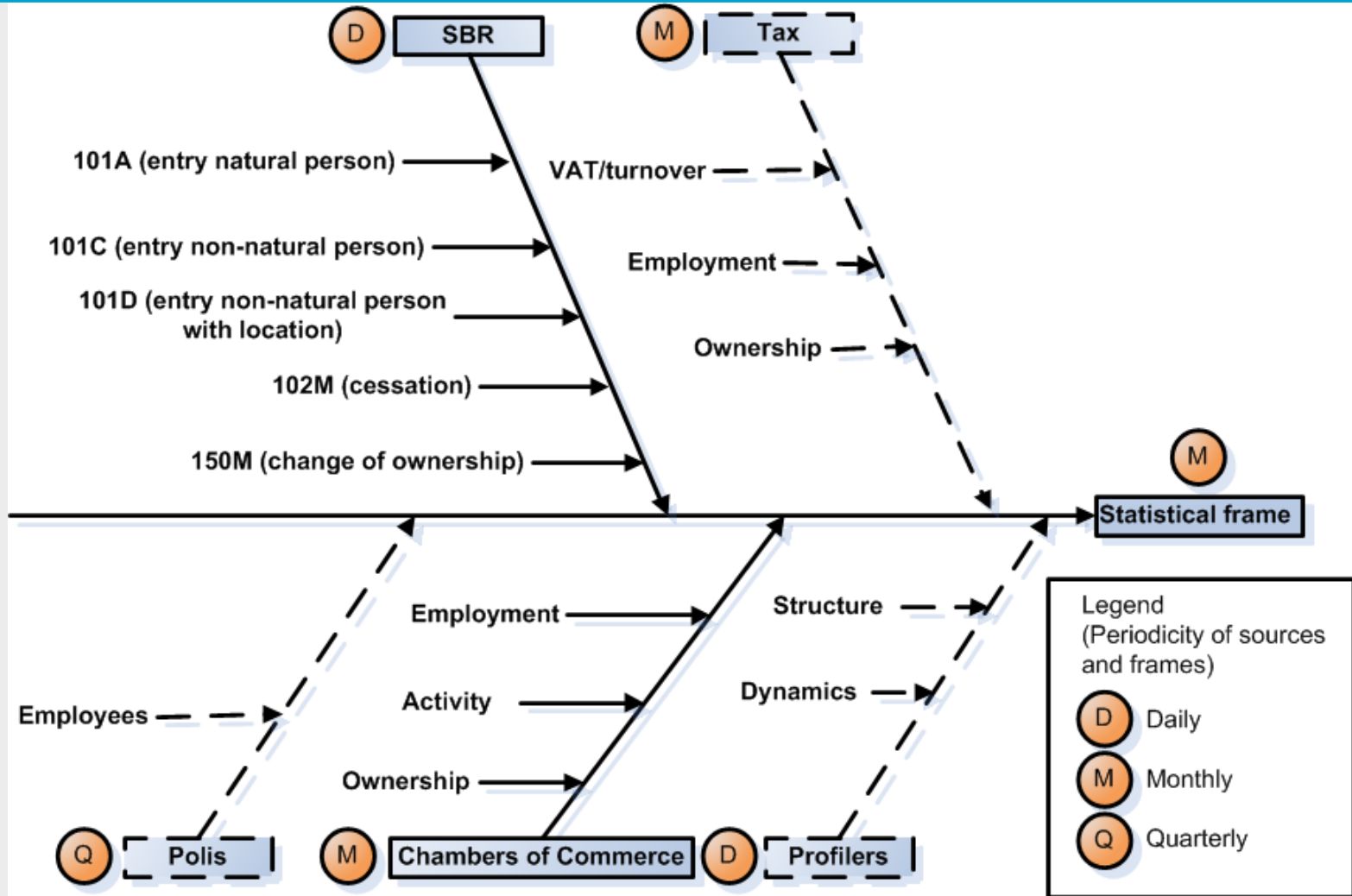
# Faster figures

- Nowadays people want to be informed in a fast way about events in the society
- Statistics Netherlands provides daily information on our society
- However not related to current events
- In a Proof of Concept it is shown the possibility to respond to current events in a statistical process

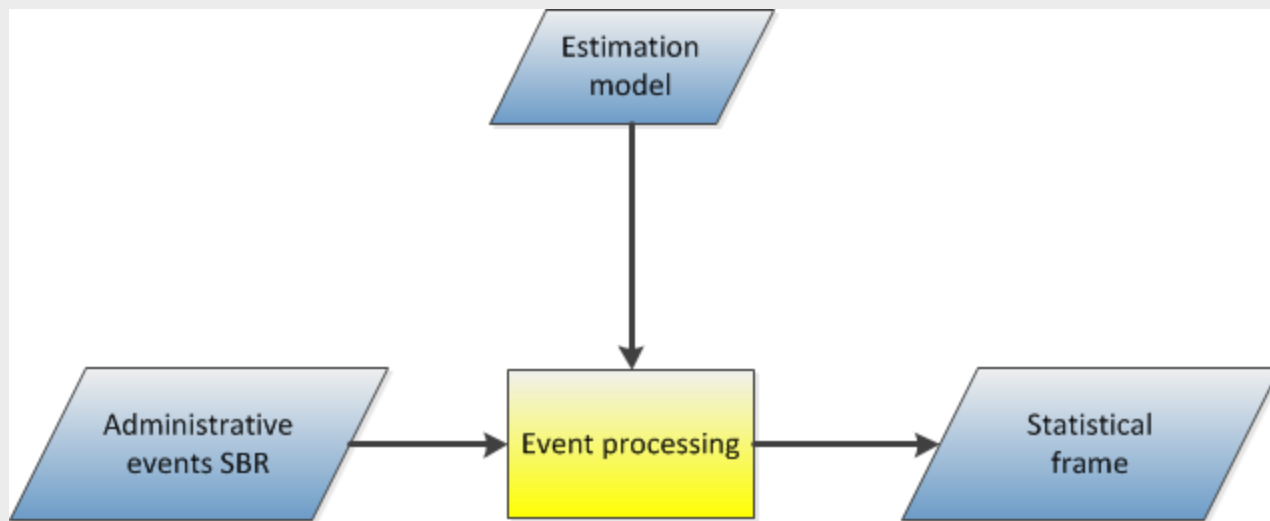
# Proof Of Concept (POC)

- Events (administrative events): daily entry and exit-registration of companies at the Chambers of Commerce
- Statistical Process: compilation of the economic demography, being redesigned from yearly survey to a yearly/quarterly statistic based on registerdata, mainly on the General Business Registry (GBR)

# Source information GBR



# Process



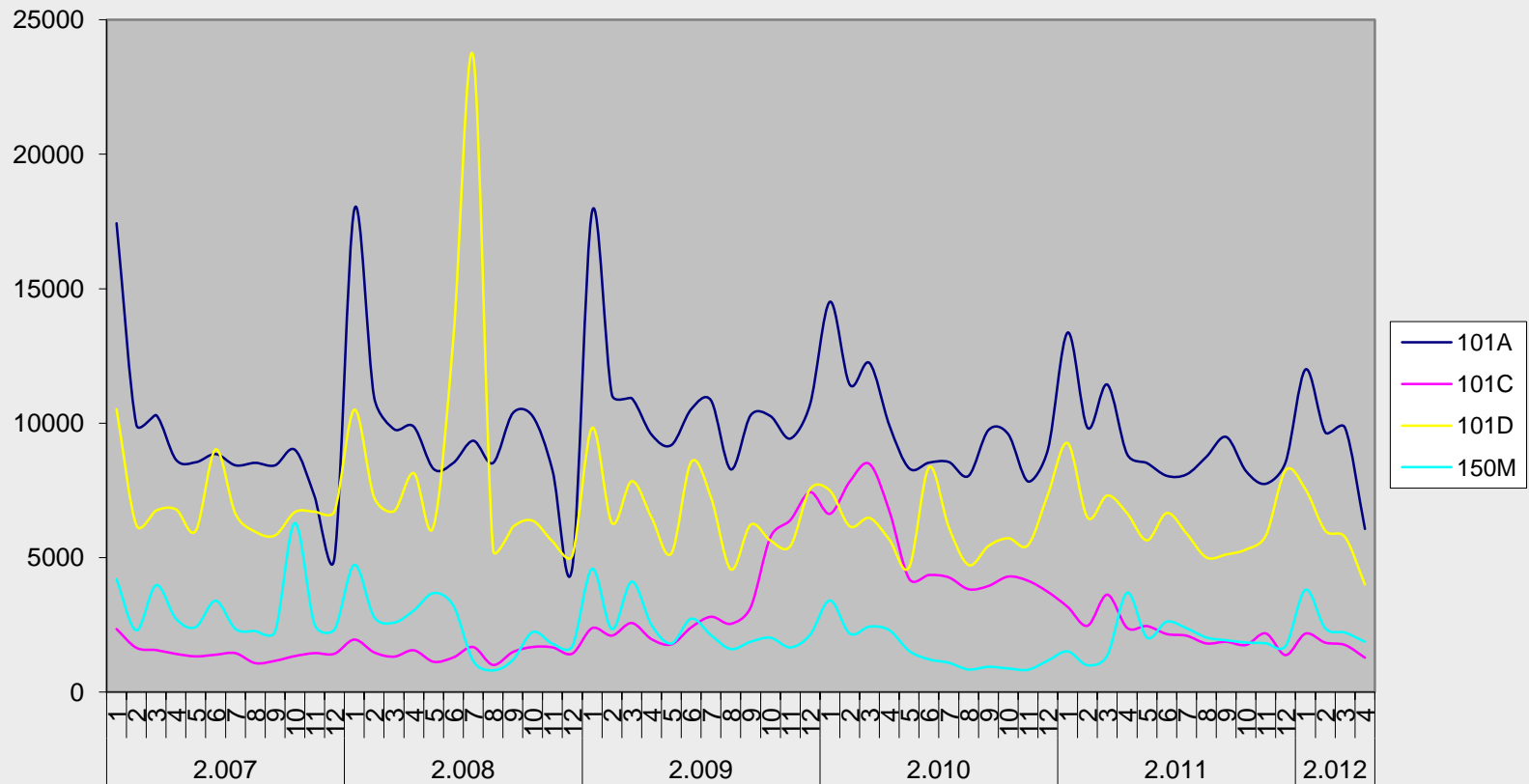
# Research input ↔ output

- Input → output  
relation administrative events and entries /  
exits in the frame
- Output → input  
entries and exits in the frame  
with/without relation to Single Business  
Register (SBR)

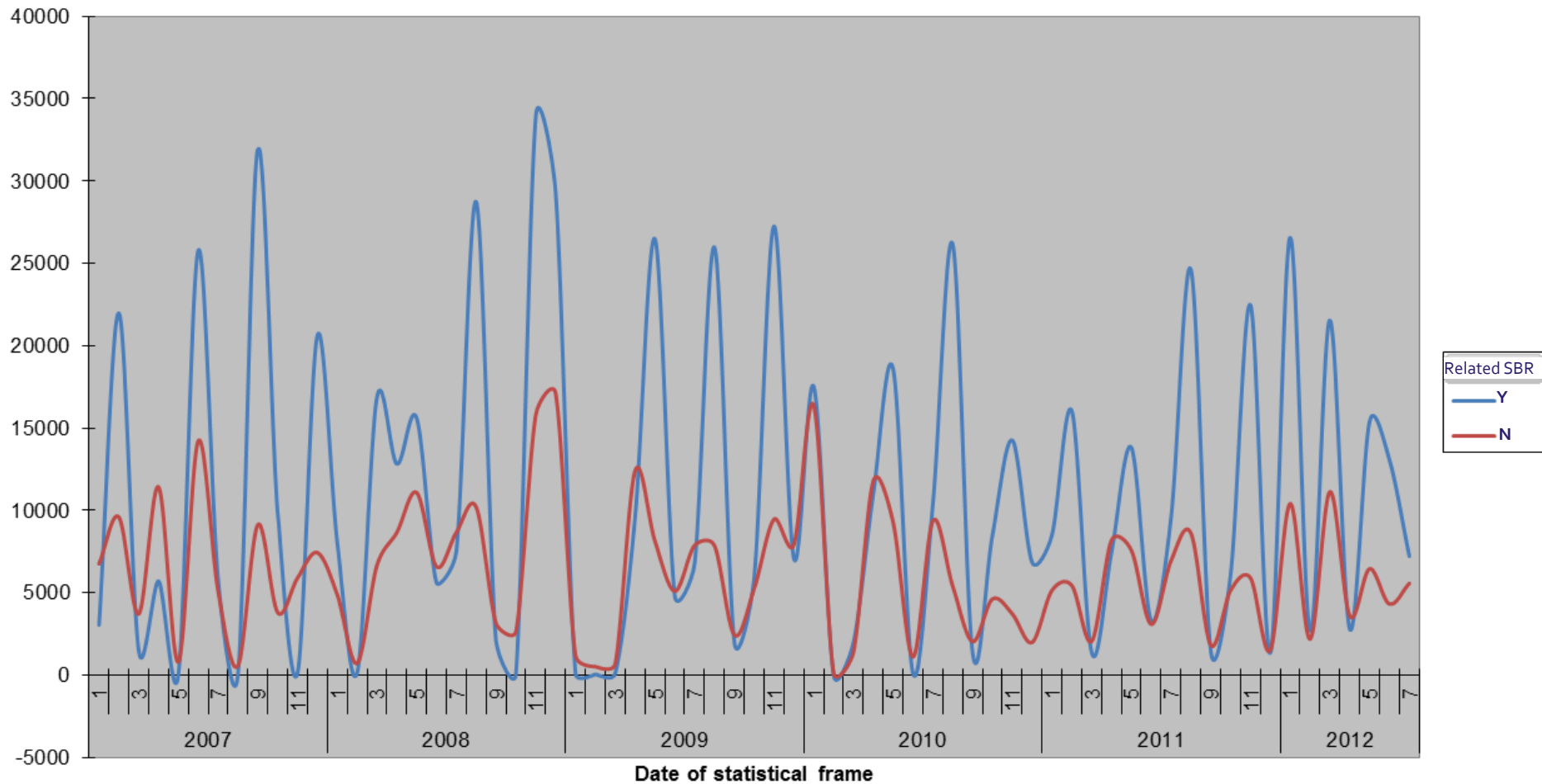


# Timeseries input SBR

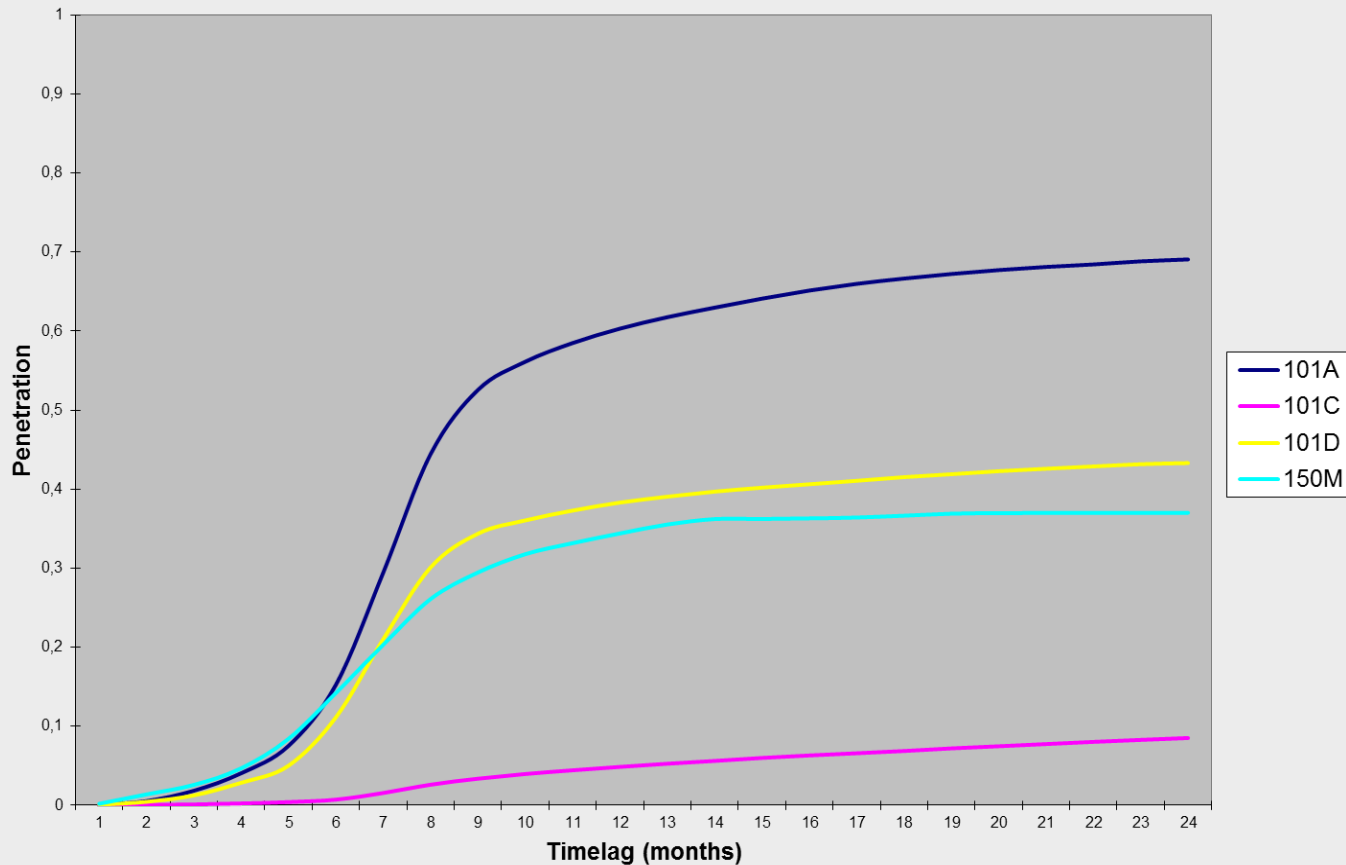
Number of administrative entries



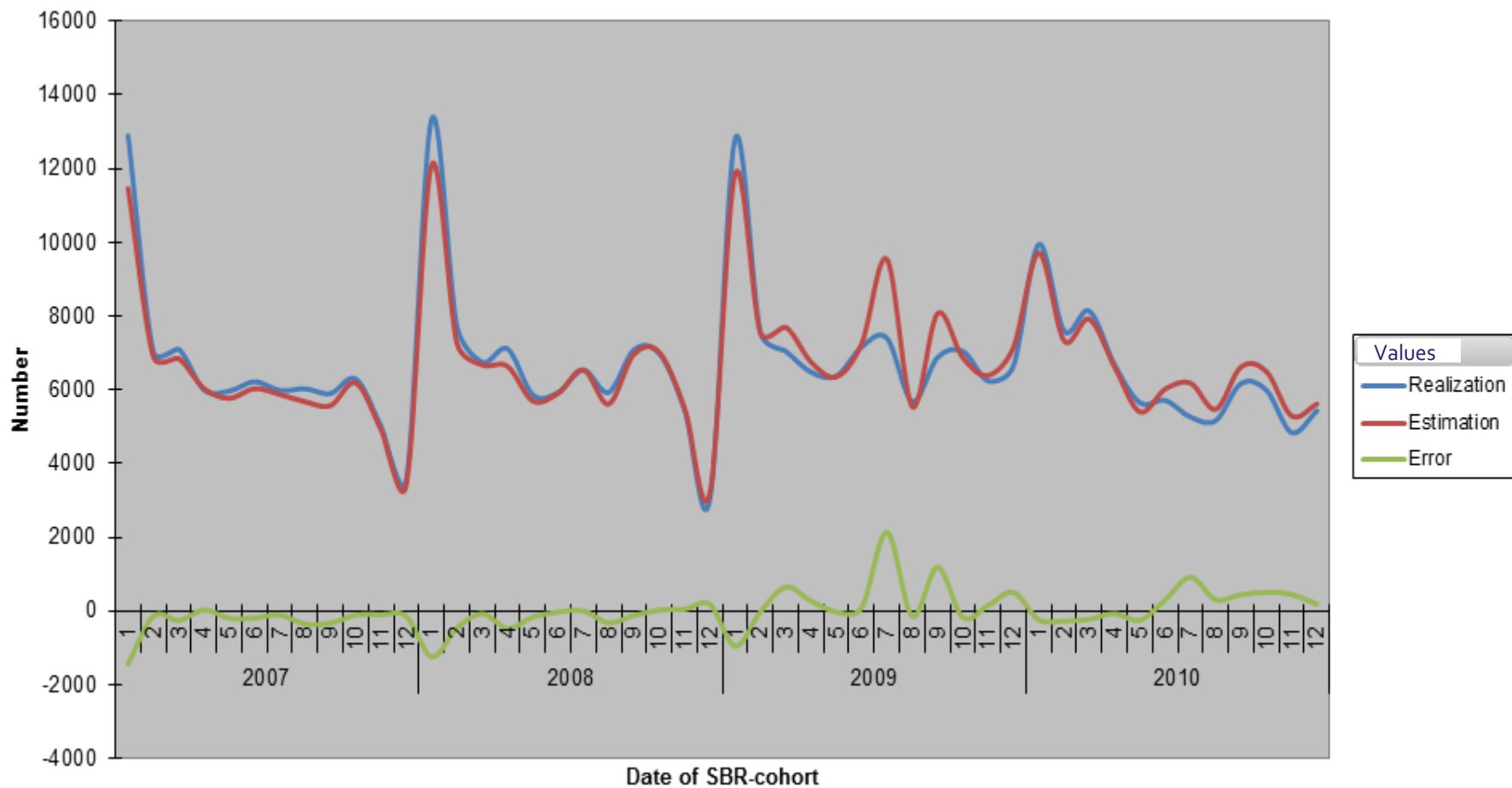
# New entries in the frame, with/without relation to SBR



# Average penetration new entries per type of event



# Realization and estimation of new entries, related to SBR



# Conclusion

- Administrative events are usable in event driven processing
- Possible to improve the timeliness dramatically
- Quality can be improved by fitting the estimation model and/or by adding new types of events