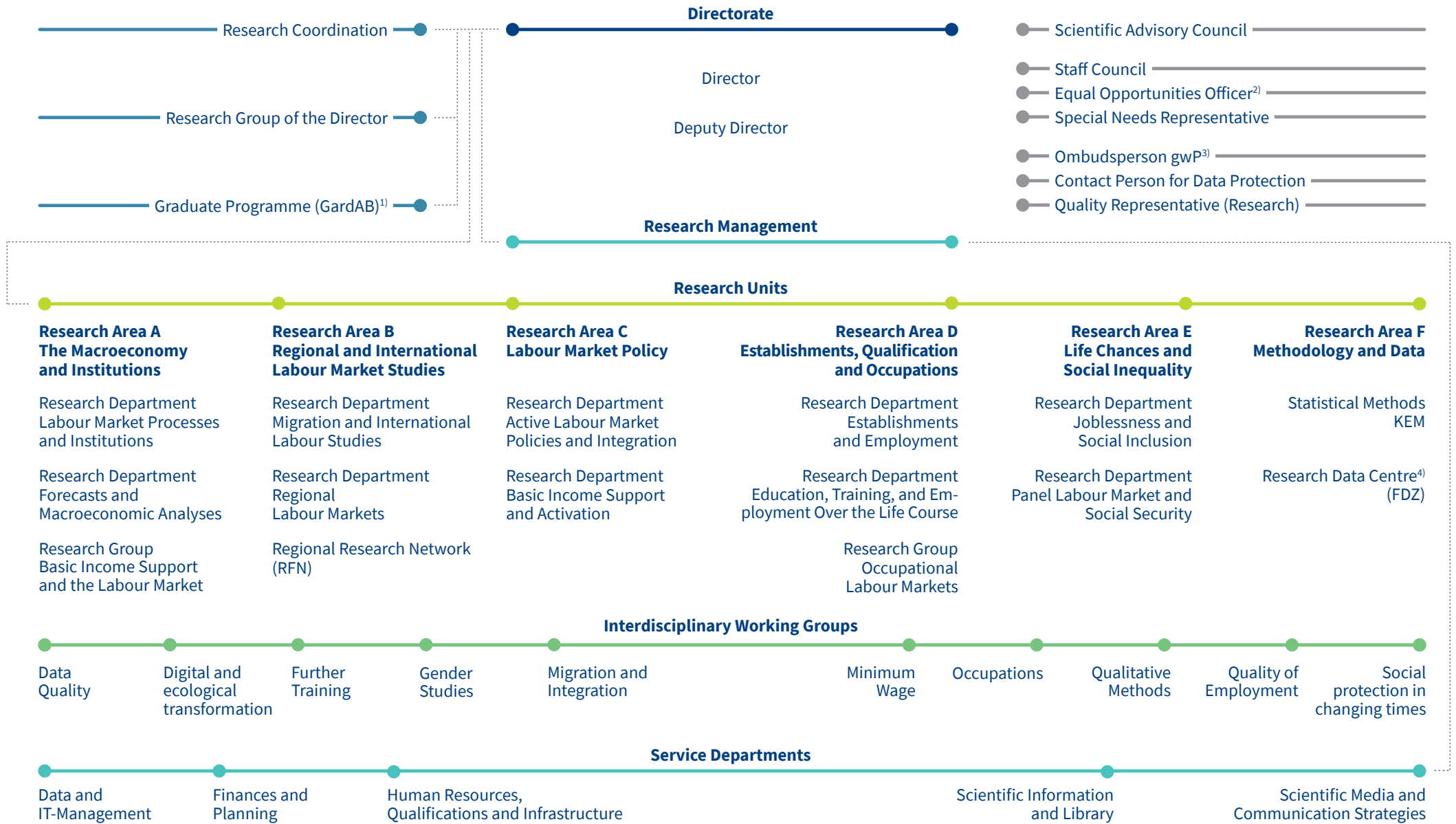


# Organizational Chart

1 October 2020



- Scientific Advisory Council
- Staff Council
- Equal Opportunities Officer<sup>2)</sup>
- Special Needs Representative
- Ombudsperson gWP<sup>3)</sup>
- Contact Person for Data Protection
- Quality Representative (Research)

1) Graduate Programme of the Institute for Employment Research (IAB) and the School of Business and Economics of the University of Erlangen-Nuremberg.

2) special legal position according to BGEIG

3) gWP = good scientific practice

4) The FDZ is a unit of the Federal Employment Agency. It is directly subordinate to IAB's Directorate.