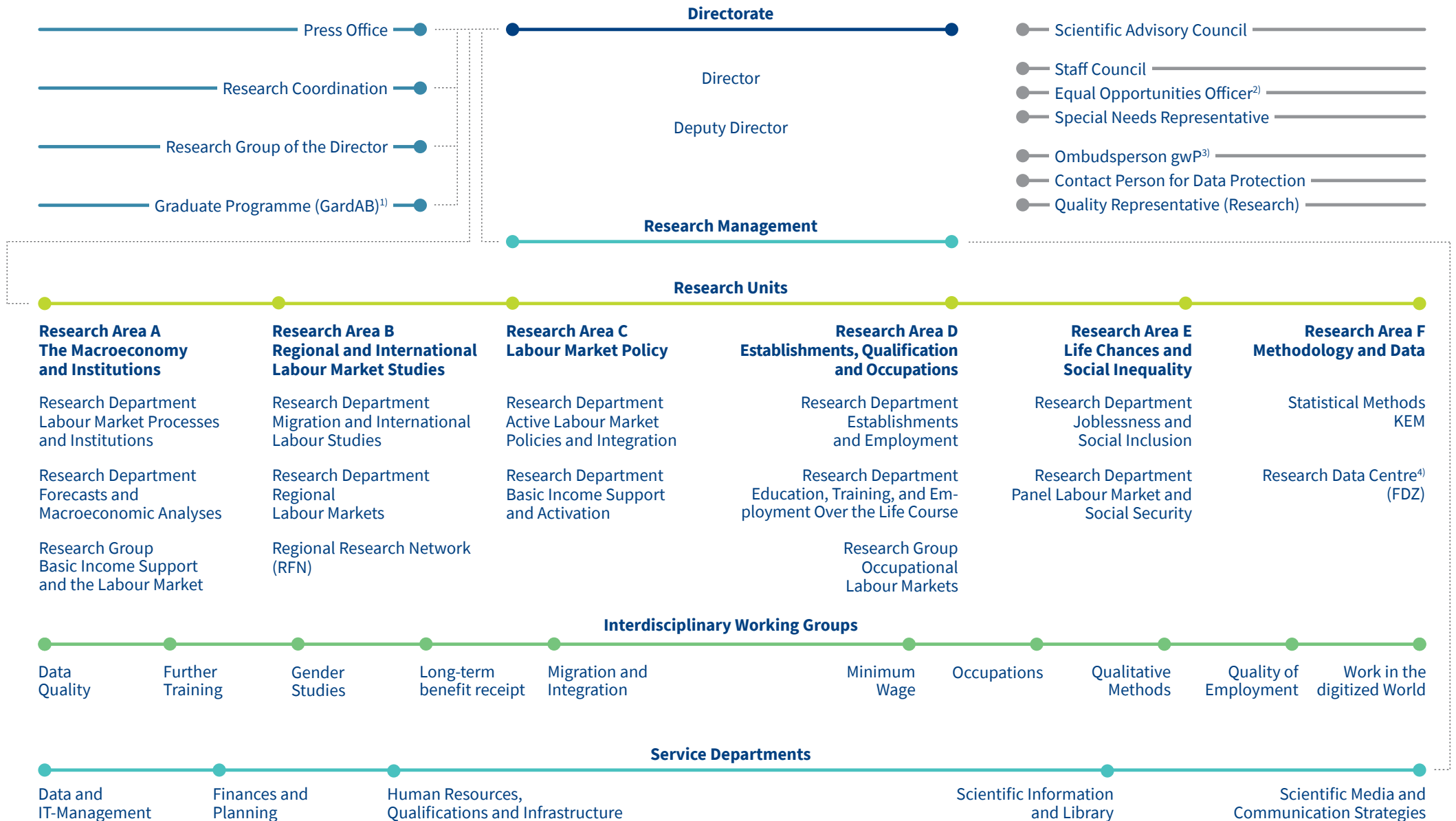


Organizational Chart

1 July 2017



1) Graduate Programme of the Institute for Employment Research (IAB) and the School of Business and Economics of the University of Erlangen-Nuremberg.

2) special legal position according to BGLeiG

3) gWP = good scientific practice

4) The FDZ is a unit of the Federal Employment Agency. It is directly subordinate to IAB's Directorate.